

ACDSee Pro 3 tutorials: Pro 3 overview for new users

1 Introduction

2 Manage mode

3 View mode

4 Process mode - Develop

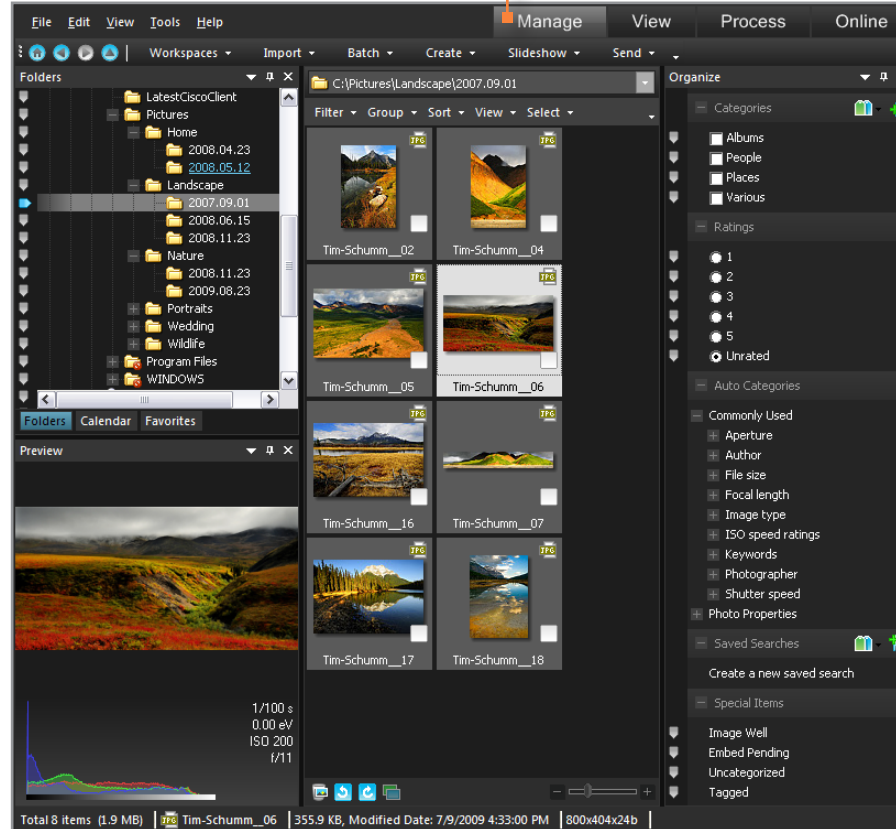
5 Process mode - Edit

6 Online mode

7 Key concepts

In ACDSee Pro Photo Manager 3, the Manage, View, Process and Online modes help to accelerate your photography workflow. You can easily switch between modes depending where you are in your workflow.

To switch between modes, click on a mode button at the top. Or use shortcut keys to switch between modes. The modes are arranged according to a typical workflow.



ACDSee Pro 3 tutorials: Pro 3 overview for new users

1 Introduction

2 Manage mode

3 View mode

4 Process mode - Develop

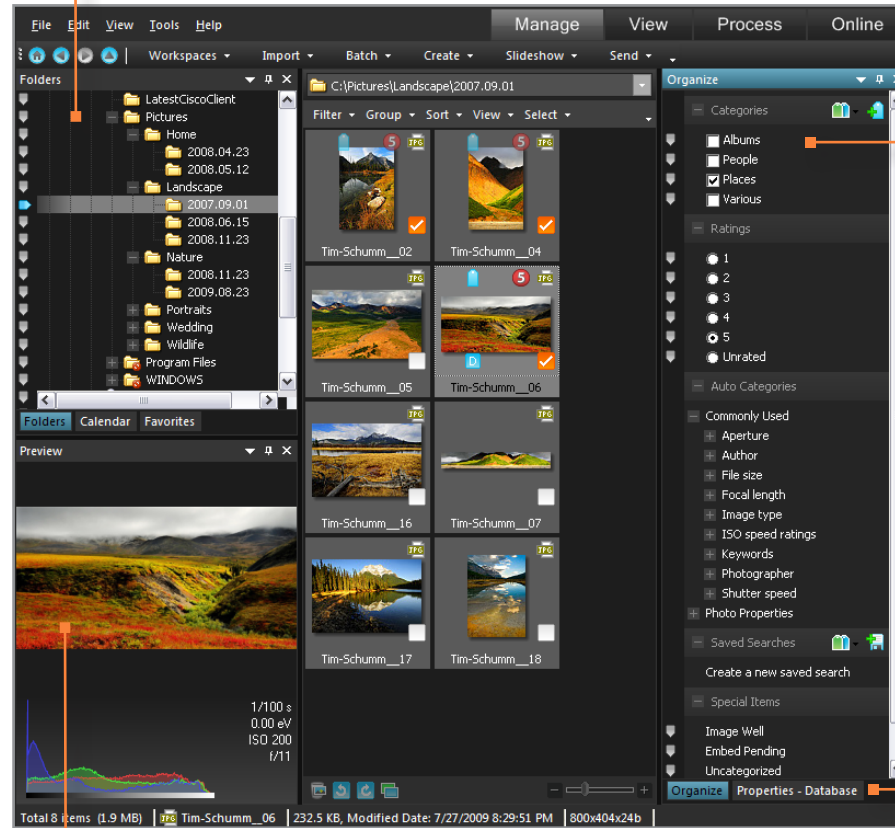
5 Process mode - Edit

6 Online mode

7 Key concepts

Use Manage mode to browse, organize, or tag your images.

The **Folders** pane displays images on your computer.



You can tag or rate your images as you view your images.

Use the Properties panes to organize your photos.

Click on an image to view it in larger size in the **Preview** pane.

ACDSee Pro 3 tutorials: Pro 3 overview for new users

1 Introduction

2 Manage mode

3 View mode

4 Process mode - Develop

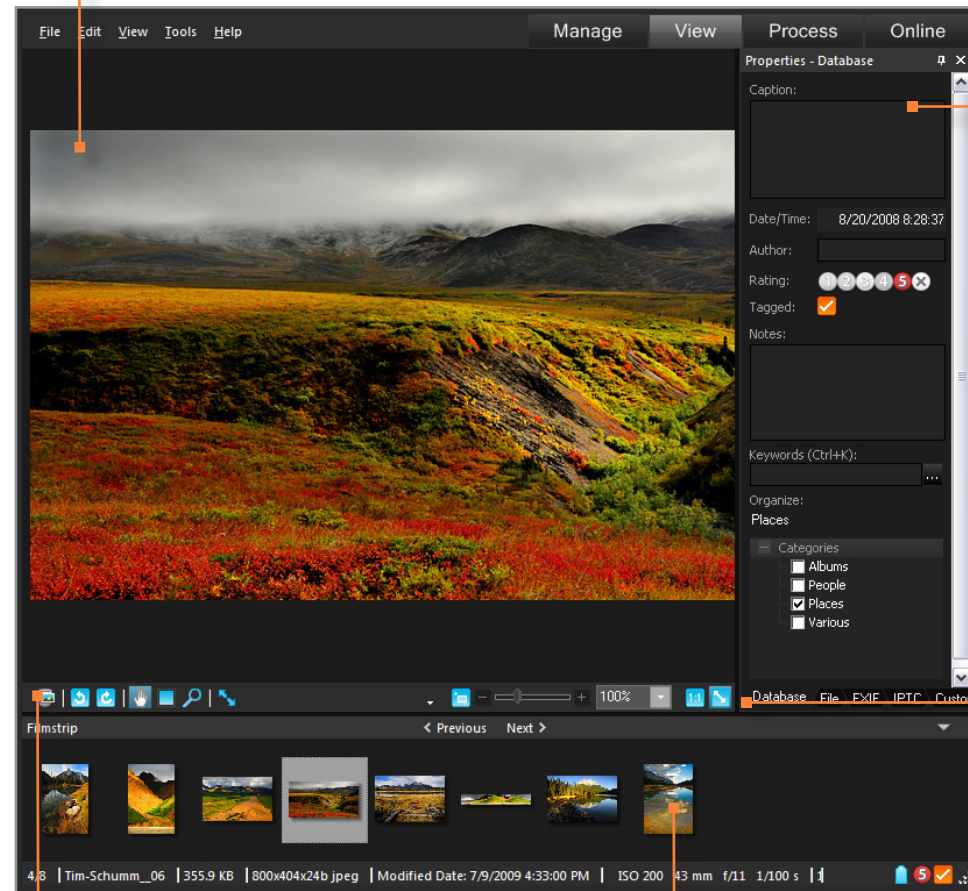
5 Process mode - Edit

6 Online mode

7 Key concepts

You can look at your images in View mode at a larger scale and decide which images to keep.

The Viewer displays the image you select in the Filmstrip.



In the **Properties - Database** pane, view or add captions, notes, or keywords. You can also assign categories, change the rating, or tag and untag you image.

Use the image viewing tools to zoom into your photos.

Rotate, zoom, or add your images to the Image Basket using these buttons.

Use the Filmstrip to scroll through your images. Click on an image to view it in the Viewer.

ACDSee Pro 3 tutorials: Pro 3 overview for new users

1 Introduction

2 Manage mode

3 View mode

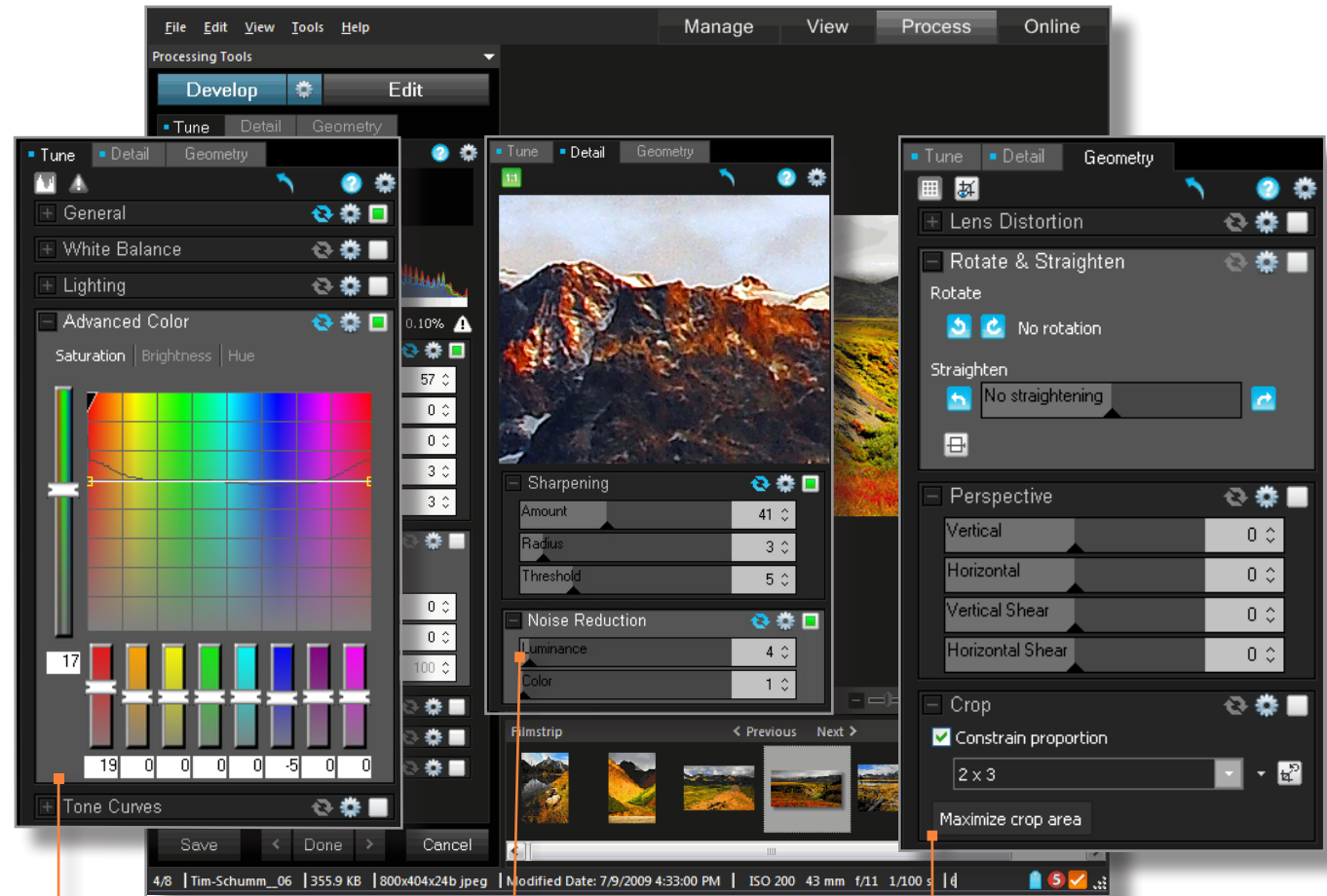
4 Process mode - Develop

5 Process mode - Edit

6 Online mode

7 Key concepts

Use Process mode to perform all image adjustments. Process mode has two sub-modes: Develop and Edit. Any change you make in Develop is applied to the entire image. It is recommended that you do the majority of your image processing in Develop because you can go back and tweak your adjustments at any time.



Adjust exposure, color, white balance and much more in the Tune tab.

Sharpen your image and reduce noise using the Details tab.

Crop, rotate, straighten, or adjust lens or perspective distortion using the Geometry tab.

ACDSee Pro 3 tutorials: Pro 3 overview for new users

1 Introduction

2 Manage mode

3 View mode

4 Process mode - Develop

5 Process mode - Edit

6 Online mode

7 Key concepts

In Process mode, use Edit to selectively change parts of your image. You can also add final touches to your image such as reducing red eye, eliminating flaws, adding special effects, borders, or a watermark.

Use the Selections tool to fix specific parts of your image.



Edit has groups of tools you can use to fine tune your image.

ACDSee Pro 3 tutorials: Pro 3 overview for new users

1 Introduction

2 Manage mode

3 View mode

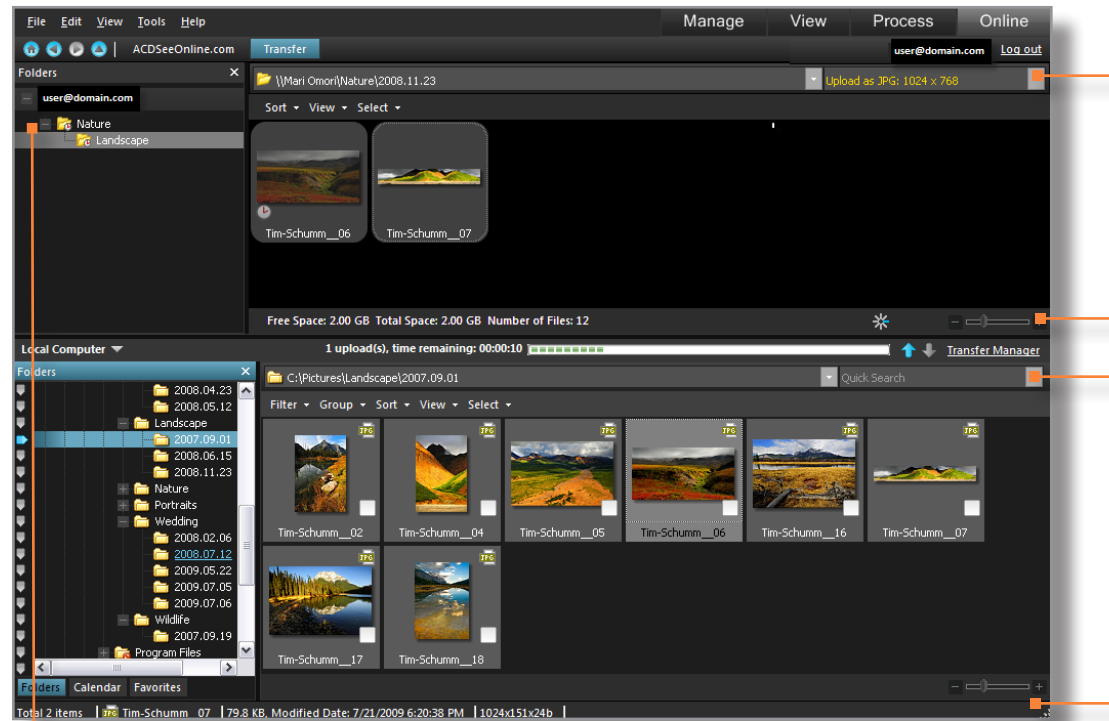
4 Process mode - Develop

5 Process mode - Edit

6 Online mode

7 Key concepts

When you are finished processing your photos, you can publish them online. Online mode allows you to continue working on other images as you upload your images to your ACDSee Online account.



The top half of the Online mode shows images in your ACDSee Online account.

The bottom half of the Online mode shows images on your computer. Click and drag photos to the top of the screen to begin uploading.

Images that you upload are automatically set to Private. You can change the privacy settings in the **Folders** pane. You can also create, rename, and delete folders.

ACDSee Pro 3 tutorials: Pro 3 overview for new users

1 Introduction

2 Manage mode

3 View mode

4 Process mode - Develop

5 Process mode - Edit

6 Online mode

7 Key concepts

Check to see if you learned these key concepts:

- » Browse, organize, tag, keyword, and categorize your images in Manage mode.
- » Use the image magnification tools in View mode to add information about your images as you view them.
- » Use the tools in Develop to perform non-destructive image adjustments, and use the tools in Edit to add finishing touches to your image.
- » Use Online mode to publish your images to ACDSee Online to store or share your images.