



P100 Series

Portable Two-Way Radios Training Presentation

The information contained herein is provided for information purposes only and is intended only to outline Motorola's presently anticipated general technology direction. The information in any roadmap is not a commitment or an obligation to deliver any product, product feature or software functionality and Motorola reserves the right to make changes to the content and timing of any product, product feature or software release. Prices for any future product or software included herein will be separately negotiated when and if such product or software becomes available.



P100 Series

Portable Two-Way Radios

Training Presentation



Modules



P100 Series

0. Product Overview

0.1 Product Positioning

1. Product Overview

- 1.1 Product Introduction
- 1.2 Product Attributes
- 1.2 Product Ergonomics
- 1.3 Specifications
- 1.4 Product Package

2. Feature and Benefit

- 2.1 Conventional Features & Benefits
- 2.2 Signaling Features & Benefits
- 2.3 Physical Features & Benefits
- 2.4 CPS Features & Benefits



3. Accessories

- 3.1 Some Uses of Accessories
- 3.2 Remote Speaker Mic (RSM)
- 3.3 Headsets
- 3.4 Earpieces / Earsets
- 3.5 Surveillance Kit
- 3.6 Carrying Accessories
- 3.7 Batteries & Chargers
- 3.8 Antennas



4. Radio Operation

- 4.1 Basic Features Operations
- 4.2 Voice Inversion Scrambling
- 4.3 VOX Operation
- 4.4 FPP

5. CPS Programming

- 5.1 CPS Programming



Module 0

P100 Series Product Positioning & Pricing



P100 Series

Module Content

0.1 Product Positioning



MOTOROLA and the Stylized M Logo are registered in the US Patent & Trademark Office.
All other product or service names are the property of their respective owners. © 2009 Motorola, Inc.
All rights reserved.

Module 0.1

Motorola EMEA Portfolio



P100 Series

Market Tier	Motorola Products
Mission-Critical Tier	Dimetra & ASTRO
Professional Tier	MOTOTRBO & Professional Series
	E100 & Commercial Series
Commercial Tier	MagOne & Alpha Series
Consumer & Retail Tier	CRBR Portfolio

MOTOROLA and the Stylized M Logo are registered in the US Patent & Trademark Office.
All other product or service names are the property of their respective owners. © 2009 Motorola, Inc.
All rights reserved.

Module 0.1

Product Positioning



P100 Series

Commercial Tier

MagOne & Alpha Series



Ultra-low Tier

P100 & Commercial Series



Low Tier

Mid Tier

Professional Tier

MOTOTRBO & Professional Series



High Tier

MOTOROLA and the Stylized M Logo are registered in the US Patent & Trademark Office.
All other product or service names are the property of their respective owners. © 2009 Motorola, Inc.
All rights reserved.

* Non EU only # EU Only

Module 1

P100 Series Product Overview



P100 Series

Module Content

- 1.1 Product Introduction
- 1.2 Product Attributes
- 1.2 Product Ergonomics
- 1.3 Specifications
- 1.4 Product Package



MOTOROLA and the Stylized M Logo are registered in the US Patent & Trademark Office.
All other product or service names are the property of their respective owners. © 2009 Motorola, Inc.
All rights reserved.

Module 1.1

Product Introduction



P100 Series

The Motorola P100 Series offers commercial users a two-way radio solution with a extensive feature set and ergonomic shape in a durable, lightweight, compact design— helping organizations increase efficiency and productivity.



Increased Functionality

- Tighter specifications
- Build-in Simple voice scrambling
- VOX ready
- Build-in DTMF signaling
- Front Panel programming
- Li-Ion battery available

Improved Ergonomics

- Robust design
- Lightweight & compact
- Large, textured PTT
- 8-digit alpha-numeric LCD
- Large on / off / volume control

Quality Features at a Competitive Price

Module 1.2

Product Attributes



P100 Series

Better Audio

- The P100 Series radios are design to perform at 70dB Rx Spurious Rejection, Rx Intermodulation & Rx Adjacent Channel Selectivity at 25kHz, thus providing better rejection towards adjacent channels noise.
- The speaker produces powerful 500mW of audio output to penetrate high noise environment.
- Companding technology provide crisp audio while minimizing distortion at high volume levels, by compressing the voice when transmitting and expanding the voice back on the receiver.



Module 1.2

Product Attributes



P100 Series

Better Flexibility

- P100 Series comes with the Front Panel Programming capability, which enables user to program the radio without the need for CPS.



Module 1.2

Product Attributes



P100 Series

Essential Feature Loaded

- 99 Channels
- Build-in VOX
- Built-in Voice Inversion Scrambling
- Built-in DTMF Signaling
 - PTT-ID (Individual, Group, ALL) encode & decode
 - Selective Call encode & decode
 - Call Alert encode & decode
- Front Panel Programming (FPP) capability
- Li-Ion / NiMH Battery offering



Module 1.2

Product Attributes



P100 Series

Simple Operation & Improved Ergonomics

- Comfortable Channel knob
- Well positioned buttons
- LED to indicate transmission mod
- Large LCD for reading radio channel and status
- Durable, Lightweight, Compact Design



Module 1.2

Product Attributes



P100 Series

Quality—*The Motorola P100 Series radio is designed and tested to meet various levels of both internal and external quality standards.*

ALT—Accelerated Life Test

- Series of stringent Motorola internal test to simulate 5 years of hard use in real life.
- Consisted of drop test, temperature shock test, vibration, dust, ESD and humidity test.

MIL Spec 810C, D, E and F

- Stamp of approval from the U.S. Military for use in rough environment
- Consisted of Salt Fog & dust test, low and high temperature storage and operation test

IP54 rating

- International Protection (IP) against dust (rating 5) and water (rating 4)



Module 1.3

Physical Attributes



P100 Series



MOTOROLA and the Stylized M Logo are registered in the US Patent & Trademark Office.
All other product or service names are the property of their respective owners. © 2009 Motorola, Inc.
All rights reserved.

Understanding Status Icons



P100 Series

Icon	Name	Description	Display
	Signal Strength	More bars indicate a stronger signal.	
	Power Level	"L" indicates radio is transmitting in low power. "H" indicates radio is transmitting in high power.	
	Talkaround	Radio is not transmitting through the repeater.	
	Monitor	Indicates the radio is monitoring a selected channel.	
	Scan	Arrow blinks without dot, when scan is activated. Arrow and dot are fixed when there is some activity on a non-priority channel. Dot blinks and arrow is fixed when there is some activity on the priority channel.	
	Scrambling	Scrambling feature is activated.	
	Programming Mode	Radio is in Programming Mode.	
	Keypad Lock	Keypad is locked.	
	Battery Meter	Indicates remaining charge in battery based on number of bars (0 - 3). Blinks when battery is low.	

Programmable Buttons



P100 Series

Well positioned 3 front + 2 side programmable buttons

- Buttons are dual functional: short and long press
- Functions programmable via CPS



LED Color Indicator



P100 Series



LED Color	State	Indication
Green	Illuminated	Radio is transmitting in normal mode. Radio is transmitting in scrambling mode.
	Normal Blinking	Radio is receiving in normal mode. Channel is Busy. Radio passed self test during powering up.
Amber	Illuminated	Monitor activated. Permanent sticky monitor activated. Selective call received
	Normal Blinking	Radio is in active scan mode. Radio is receiving in scrambling mode.
	Fast Blinking	Call alert received
Red	Normal Blinking	Radio is transmitting in normal mode while battery is low. Radio is transmitting in scrambling mode while battery is low.
	Fast Blinking	Radio failed self test during powering up.

Module 1.4

Product Specifications



P100 Series



General Specifications	
Frequency Range	136-174MHz, 403-447MHz, 435-480MHz
Memory Channels	99 CH
Channel Spacing	12.5/25 kHz switchable
Operating Temperature Range	-30C to +60C (Radio)
Sealing	Passes rain testing per IP54
DIMENSIONS (H X W X D) WITH	
<i>Lilon battery</i>	120 x 55 x 35.5 mm
<i>NiMH battery</i>	120 x 55 x 36.5 mm
<i>High Capacity Lilon battery</i>	120 x 55 x 40.7 mm
WEIGHT WITH	
<i>Lilon battery</i>	335 g
<i>NiMH battery</i>	395 g
<i>High Capacity Lilon battery</i>	342 g
AVERAGE BATTERY LIFE @5-5-90% DUTY CYCLE (HIGH POWER), WITH	
<i>Lilon battery</i>	11 hrs
<i>NiMH battery</i>	9 hrs
<i>High Capacity Lilon battery</i>	16 hrs

MOTOROLA and the Stylized M Logo are registered in the US Patent & Trademark Office.
All other product or service names are the property of their respective owners. © 2009 Motorola, Inc.
All rights reserved.

Module 1.4

Product Specifications (cont.)



P100 Series



Transmitter	
RF Output High Power	5W (VHF), 4W (UHF)
Low Power	1W
Spurs and Harmonics	9kHz - 1GHz < -36dBm, > 1GHz < -30dBm
Frequency Stability (-30°C to +60°C)	+/- 2.5ppm
FM Hum & Noise	> 40dB
Modulation Limiting	<= 5Khz (25KHz), <= 2.5Khz (12.5kHz)
Audio Response (from 6dB/oct pre-emphasis, 300-3000Hz)	+1/-3dB
Audio Distortion @ 1kHz tone, 60% rated max dev.	<5%
Receiver	
Sensitivity (12dB SINAD)	<-119 dBm (0.25uV)
Adjacent Channel Selectivity	> 70dB (25KHz), >65dB (12.5kHz)
Intermodulation	>70dB
Spurious Rejection	>70dB
Audio Distortion	<5%
Hum and Noise	>40dB
Conducted Emission	< -57dBm for below 1GHz, < -47dBm for above 1GHz
Audio Output @ <5% Distortion	500mW (at 24 ohm)

MOTOROLA and the Stylized M Logo are registered in the US Patent & Trademark Office.
All other product or service names are the property of their respective owners. © 2009 Motorola, Inc.
All rights reserved.

Module 1.5

Standard Sales Model Content



P100 Series

Standard Package includes:

- Radio
- Antenna
- Battery Li-Ion or NiMH
- Charger
- Belt clip
- User Guide and Safety Manual



Module 2

P100 Series Features and Benefits



P100 Series

Module Content

2.1 Conventional Features & Benefits

2.2 Signaling Features & Benefits

2.3 Physical Features & Benefits

2.4 CPS Features & Benefits



MOTOROLA and the Stylized M Logo are registered in the US Patent & Trademark Office.
All other product or service names are the property of their respective owners. © 2009 Motorola, Inc.
All rights reserved.

Module 2.1

Conventional Features & Benefits



P100 Series

Features	Benefits
99 Channels	Provides extensive amount of channels for users to operate on, thus providing greater flexibility in call group management.
Built in VOX	VOX enables hand-free operation as a user's voice activates the PTT activation. Radio no longer requires additional option board for the VOX function as this feature is built in.
Built in voice inversion scrambling	Voice inversion scrambling provides a measure of security over the transmission. Radio without this feature will not provide an intelligent output as the voice signals are scrambled.
Front Panel Programming (FPP) capability	Front Panel Programming (FPP) enables the user to program the radio without using the CPS. This provides a great flexibility as programming no longer relies on availability of CPS.
70dB Rx Spurious Rejection, Rx Intermodulation & Rx Adjacent Channel Selectivity at 25Khz.	Better RF specifications provide the radio with better rejection against noise from the adjacent channels, thus providing clearer transmission.

Module 2.1

Conventional Features & Benefits (Con't)



P100 Series

Features	Benefits
Repeater / Talkaround	At a touch of a button, the radio switches between repeater mode and talkaround mode.
Monitor	Radio monitors the current channel for transmission activity. Once activity is detected on the channel, the radio will un-mute to the voice thus enabling the user to listen to the traffic.
Normal and Priority Scan	Enables users to monitor multiple channels and receive calls when transmitted on the channel. As for priority scan, users can assign a certain channel to be scan on, 50% of the time.
Prime Channel	Prime channel would be the channel that requires the most monitoring. Therefore the radio would go back to this channel if the radio is idle on the other channel for a certain time limit or the Prime channel button is pressed.
Channel Alias	Channels can be program to a name (alias). The LCD will display the alias when the scanning radio detects the transmitting channel.
Power Level Selectable	Allows users to change the transmit power from Low to High and vice versa at a press of a button. This setting is per channel basis. It allows users to save battery life when high power transmission is not required.

Module 2.2

Signaling Features & Benefits–DTMF Signaling



P100 Series

Features	Benefits
PTT-ID (Individual, Group, ALL) encode & decode	This enables the identity of the transmitting radio to be shown on the radio LCD thus eliminating the need for identification via voice.
Selective Call encode & decode	Enables users to select a particular personal or group for call without involving other units. This reduces the channel congestion as it eliminates unnecessary conversation between users.
Call Alert encode & decode	Enables users to alert an individual or group of radio users that an attempt is being made to contact them. This feature enables busy channel users to be contacted easily. Apart from that, it alerts the user of an incoming call if the user momentarily steps away from the radio.

Module 2.3

Physical Features & Benefits



P100 Series

5 Fully Programmable Buttons—

Supports up to 10 product features (short/long press) with just one touch.

8 Character Alphanumeric—Display large backlit LCD display with icons, to display channel number, Caller ID, Channel alias and feature enable/disable.

Green band on PTT button—Provides greater visibility of PTT button location.

Larger speaker installed—Louder voice output.



Module 2.4

CPS Features & Benefits



P100 Series

Systematic, easy to navigate menu

Code plug duplicate button

Provides customer summary report

Comprehensive help menu provided

USB programming cable

- Does not require additional equipment such as RIB box, external power supply and serial cables.
- USB interface widely available.



Module 2.4

CPS User Interface



P100 Series

CP1660

General Settings

Buttons

DTMF Signaling

Phone

DTMF Call

CALL001

Channels

ABC01

HOME

CH003

CH004

CH005

CH006

CH007

CH008

CH009

CH010

CH011

CH012

CH013

CH014

CH015

CH016

CH017

CH018

CH019

CH020

CH021

CH022

CH023

CH024

CH025

CH026

CH027

CH028

CH029

CH030

CH031

General Settings

[Top](#)
[Tone Alerts](#)
[User Defined PL](#)
[Standby Times](#)

Codeplug Password

Audio Gain Level (Speaker)

Microphone Sensitivity (dB)

VOX Hold Time

VOX Gain

Back Light

Battery Type

Battery Saver

TOT (s)

Time Out Warning Timer (s)

Prime Channel

Prime Ch Return Hang Timer (s)

Tx Hang Timer (ms)

Scrambling Code (KHz)

Menu Timeout (s)

Quick Key Override

Scroll Text

Enable FPP

Codeplug Password

Description

Sets a password for the current codeplug. Password protection is required to protect the codeplug from being changed by unauthorized programming. The password prompt appears when the user attempts to do any of these features: reading from the radio, writing to the radio or opening a password protected

Module 2.4

CPS customer handouts and summary



P100 Series

MOTOROLA
Serial Number 0278JH7862 Model Number AZH03RDK8AA9

- 1 Power On/Off, Volume
- 2 Push To Talk
- 3 Microphone
- 4 Short Press: Unassigned
Long Press: Unassigned
- 5 Short Press: Squelch Type
Long Press: Unassigned
- 6 Short Press: Channel Scan
Long Press: Unassigned
- 7 Short Press: Power Level
Long Press: Unassigned
- 8 Short Press: Squelch Type
Long Press: Unassigned



- 9 Display

	Description
Illuminated Green	Radio is transmitting in normal mode
	Radio is transmitting in scrambling mode
Normal Blinking Green	Radio is receiving in normal mode
	Channel is busy
	Radio passed self test during powering up
Illuminated Amber	Monitor activated
	Permanent Sticky Monitor activated
	Selective Call received
Normal Blinking Amber	Radio is in active scan mode
	Radio is receiving in scrambling mode
Fast Blinking Amber	Call Alert received
Normal Blinking Red	Radio is transmitting in normal mode while battery is low
	Radio is transmitting in scrambling mode while battery is low

Model Number AZH03RDK8AA9
Serial Number 0278JH7862

CPS Channels Summary

	CH001	CH002	CH003	CH004	CH005
Position	1	2	3	4	5
Channel Enabled	Enabled	Enabled	Enabled	Enabled	Enabled
Channel Bandwidth (KHz)	25	25	25	12.5	12.5
Scan List	List1	List1	List1	List1	List1
Scan Type	Normal Scan	Normal Scan	Normal Scan	Normal Scan	Normal Scan
Call Type	Sel Call	Sel Call	Sel Call	Sel Call	Sel Call
Squelch Setting	Normal	Tight	Tight	Tight	Tight
PL Required for Call	Disabled	Disabled	Disabled	Disabled	Disabled
Allow Talkaround	Disabled	Disabled	Disabled	Disabled	Disabled
Ack Individual Call	Disabled	Disabled	Disabled	Disabled	Disabled
Scrambling	Disabled	Disabled	Disabled	Disabled	Disabled
RX Only	Disabled	Disabled	Disabled	Disabled	Disabled
Phone Mode	Disabled	Disabled	Disabled	Disabled	Disabled
Companding/Expanding	Enabled	Disabled	Disabled	Disabled	Disabled
RX					
Frequency (MHz)	435.125000	457.525000	479.875000	453.125000	457.525000
Squelch Type	CSQ	CSQ	CSQ	CSQ	CSQ
DPL Code (Octal)	023	023	023	023	023
DPL Invert	Disabled	Disabled	Disabled	Disabled	Disabled
TPL Frequency (Hz)	67.0	67.0	67.0	67.0	67.0
TPL Code	XZ	XZ	XZ	XZ	XZ
Mute/Unmute Rule	Std Unmuting, Std Muting	Std Unmuting, Std Muting	Std Unmuting, Std Muting	Std Unmuting, Std Muting	Std Unmuting, Std Muting
TX					
Frequency (MHz)	435.125000	457.525000	479.875000	453.125000	457.525000
Squelch Type	CSQ	CSQ	CSQ	CSQ	CSQ
DPL Code (Octal)	023	023	023	023	023
DPL Invert	Disabled	Disabled	Disabled	Disabled	Disabled
TPL Frequency (Hz)	67.0	67.0	67.0	67.0	67.0
TPL Code	XZ	XZ	XZ	XZ	XZ
Reverse Burst Phase	Disabled	Disabled	Disabled	Disabled	Disabled
Power Level	Low	High	High	Low	Low
PTT ID	Disabled	Disabled	Disabled	Disabled	Disabled
DPL Turn-Off Code	Disabled	Disabled	Disabled	Disabled	Disabled
VOX	Disabled	Disabled	Disabled	Disabled	Disabled
Busy Channel Lockout	Disabled	Disabled	Disabled	Disabled	Disabled

Module 3

P100 Series Accessories



P100 Series

Module Content

- 3.1 Some Uses of Accessories*
- 3.2 Remote Speaker Mic (RSM)*
- 3.3 Headsets*
- 3.4 Earpieces / Ear sets*
- 3.5 Surveillance Kit*
- 3.6 Carrying Accessories*
- 3.7 Batteries & Chargers*
- 3.8 Antennas*



Module 3

Why Learn about Accessories



P100 Series

Accessories complete and personalize a radio solution

- Security officer may use a surveillance earpiece so radio communication is not shared with the public
- Service industry worker may use a lightweight temple transducer headset so he can keep his ears uncovered, allowing him to pay attention to his customers

Module 3.1

Some Uses of Accessories



P100 Series

Carry

- Makes carrying a radio easier
- Protects the radio
- Ease of removal from belt

Audio

- Keep user's hands free
- No need to pull out radio from the belt for communication
- Discreet communications
- Noise reduction
- Other specialty needs



Module 3.1

Some Uses of Accessories



P100 Series

Spare Batteries

- Ensure Radio has energy when it needs
- Avoids unnecessary charge/discharge cycles

Others

- Additional functions not available on radio



Module 3.2

Remote Speaker Microphone (RSM)

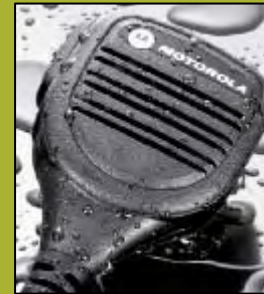


P100 Series

- Most commonly used audio accessory
- Worn on the shoulder, allows talk & listen without removing radio from belt

Wind porting speaker microphones boast revolutionary features that allow the public safety professional to have clear and confident communication in the presence of high winds and other severe weather conditions.

Provides an affordable option for light radio users.



MDPMMN4029
Remote Speaker
Microphone, IP57
Mic Head



MDPMMN4013
Remote Speaker
Microphone with
3.5mm audio jack,
IP54 Mic Head



MDPMMN4008 (Mag One)
Remote Speaker
Microphone

Module 3.2



P100 Series

- Secondary Audio Accessories for use with PMMN4013 RSM
- Allows option for discreet/private communications when using the RSM



WADN4190
Receive-Only
Flexible Earpiece



MDPMLN4620
Receive-Only
D-Shell Earpiece



MDRLN4885
Receive-Only Earbud



MDRLN4941
Receive-Only
Earpiece with
Translucent Tube

Module 3.3

Headsets



P100 Series

- Provides high-clarity, discreet two-way communication while maintaining comfort necessary for extended wear



**Lightweight Temple
Transducer Headset
PMLN5003**

Uses bone conduction to allow users to receive audio without covering the ear, so as to keep ears alert to ambient sounds



**Lightweight Headset
HMN9013**

Lightweight, single muff, with swivel boom mic and in-line PTT



**Lightweight Headset (Mag One)
MDPMLN4445**

Ultra-light, single muff, with boom mic and in-line PTT/VOX switch

Module 3.4

Earpieces/Earsets



P100 Series

- Discreet/private Communications
- Various styles to suit different user preferences



PMLN5001
D-Style Earpiece with
In-Line Mic & PTT



MDPMLN4443 (Mag One)
Flexible Ear Receiver with
In-Line Microphone and
PTT/VOX switch



MDPMLN4442 (Mag One)
Earbud with In-Line
Mic and PTT/VOX
Switch



MDPMLN4444 (Mag One)
Earset with Boom Mic
and in-line PTT/VOX
Switch

Module 3.5

Surveillance Kit

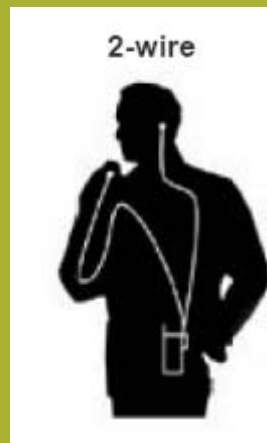


P100 Series

- Discreet / private communications
 - Optional Quick-Disconnect translucent tube allows tube to be easily changed for hygiene purposes
 - High noise kits come with foam plugs to shield out noisy environments
-
- **RLN6230:**
Extreme Noise Kit, Includes Foam Earplugs with Acoustic Tube, Black
 - **RLN6231:** *Extreme Noise Kit, Includes Foam Earplugs with Acoustic Tube, Beige*
 - **RLN6232:** *Low Noise Kit, Includes Rubber Tip with Acoustic Tube, Black*
 - **RLN6241:** *Low Noise Kit, Includes Rubber Tip with Acoustic Tube, Beige*



HMN9754
2-piece
Surveillance
Kit with
microphone
& PTT combined,
Beige



High Noise Kit



Low Noise Kit

Module 3.6

Carry Accessories



P100 Series



Belt Clip
HLN9844
Spring Belt Clip
(For 1.5" Belt Width)



Protective Case
PMLN5333 – Full Keypad Model
PMLN5334 – Limited Keypad Model
Requires use of belt clip

Module 3.7

Batteries & Chargers



P100 Series

Batteries:

- PMNN4080 - 2150 mAH min, 2250 mAH typ Li-Ion
- PMNN4081 - 1500 mAh min, 1700 mAH typ Li-Ion
- PMNN4082A/PMNN4092A - 1300 mAH min, 1400 mAH typ NiMH (IP54)
- PMNN4082B- 1300 mAH min, 1400 mAH typ NiMH



Single Unit Rapid Chargers

- PMLN5228 Charger Base
- EPNN9288 Switch Mode Pwr Supply 90-264 V US 2 pin
- EPNN9286 Switch Mode Pwr Supply 90-264 V EU 2 pin
- EPNN9287 Switch Mode Pwr Supply 90-264 V UK 3 pin



Module 3.8

Antennas



P100 Series

Flexible Whip Antennas

- VHF
 - PMAD4014: VHF Whip, 136-155MHz (14 cm)
 - PMAD4015: VHF Whip, 155-174MHz (14 cm)
 - NAD6579: VHF Whip, 148-161MHz
- UHF
 - NAE6483: UHF Whip, 403-520 MHz (16.5 cm)
 - PMAE4016: UHF Whip, 403-520 MHz
 - PMAE4008: UHF Whip, 470-530 MHz (13 cm)
 - PMAE4014: UHF Whip, 403-425MHz (19 cm)

Heliflex Antennas

- VHF
 - HAD9338: VHF Heliflex Antenna, 136-162 MHz
 - NAD6502: VHF Heliflex, 146-174 MHz
 - PMAD4049: VHF Heliflex, 146-174 MHz

Stubby Antennas

- VHF
 - PMAD4012: VHF Stubby, 136 - 155 MHz (9 cm)
 - PMAD4013: VHF Stubby, 155 - 174 MHz (9 cm)
 - HAD9742: VHF Stubby, 146 - 162 MHz (9 cm)
 - HAD9743: VHF Stubby, 162 - 174 MHz (9 cm)
- UHF
 - PMAE4002: UHF Stubby, 403 - 433 MHz (9 cm)
 - PMAE4003: UHF Stubby, 430 - 470 MHz (9 cm)

Module 4

Radio Operation



P100 Series

Module Content

- 4.1 Basic Features Operations
- 4.2 Voice Inversion Scrambling
- 4.3 VOX Operation
- 4.4 FPP



MOTOROLA and the Stylized M Logo are registered in the US Patent & Trademark Office.
All other product or service names are the property of their respective owners. © 2009 Motorola, Inc.
All rights reserved.

Module 4

Basic Features Operations



P100 Series

1. On / Off Radio & PTT

Turn knob clockwise



2. Feature Enable / Disable



MOTOROLA and the Stylized M Logo are registered in the US Patent & Trademark Office.
All other product or service names are the property of their respective owners. © 2009 Motorola, Inc.
All rights reserved.

Module 4.1

Basic Features Operations



P100 Series

- Each channel consist of a frequency pair, one for transmit and another for receive.
- Press <Right> to increase the channel number and <Left> to decrease. The LCD Screen shows the channel that the radio is operating in.
- There are a total of 99 channels (channels that have not been programmed will not be shown).
- Each channel may be configured with a PL or DPL code to provide Coded Squelch operation.



Module 4.1

Basic Features Operations



P100 Series

Setting the power level

- Select suitable power output level for optimum power/battery performance.
- Press <Power Select> to select H (High) or L (Low).
Notice that the power level icon would change accordingly.



Keypad lock/unlock

- Lock the buttons to prevent radio settings from being changed.
- Press <Keypad lock> to lock or unlock the buttons (except <PTT> and <MON>).
LOCK icon appears when the buttons are locked.
- Once buttons are locked, any button press would be ignored and would generate a negative tone.
- The lock/unlock status remains unchanged even when the radio is reset.



Module 4.2


Voice Inversion Scrambling



P100 Series

Voice inversion scrambling provides a measure of security over the transmission. Radio without this feature will not provide an intelligent output as the voice signal are scrambled.

Enable/Disable Voice Inversion Scrambling

- Long press <Scrambling> to enable the voice inversion scrambling. Press the same button again to disable this feature.
- Feature is lock on the selected channel only. Other channels are not affected by the enabling.
- There will be an icon shown on the display when enabled. 
- To change the scrambling code, configure one of the programmable buttons for this function.
- Press this button to toggle between the two codes.

Module 4.3

VOX Operation



P100 Series

VOX enables hand-free operation as user's voice activates the PTT activation. Radio no longer requires additional option board for the VOX function as this feature is built in.

Enable/Disable VOX

- Press <VOX> to enable the VOX. Press the same button again to disable this feature.
- Feature is lock on the selected channel only. Other channels are not affected by the enabling.
- This feature needs to be first enabled via the CPS on the selected channel.

Module 4.4

FPP



P100 Series

Front Panel Programming (FPP) enables the dealer/user to program the radio without using the CPS. This provides a great flexibility as the programming no longer rely on availability of CPS.

Entering Front Panel Programming Mode

- To do so, turn off the radio, hold the S1 button, and turn on the radio.
- Do not let go of the S1 button until the display shows 'Backlight'.
There will be the programming icon on the screen.
- Use the left/right keys to scroll through the menu, press PTT to enter the submenu, and press S1 to go back to the previous menu.
- To exit this mode, turn off the radio.



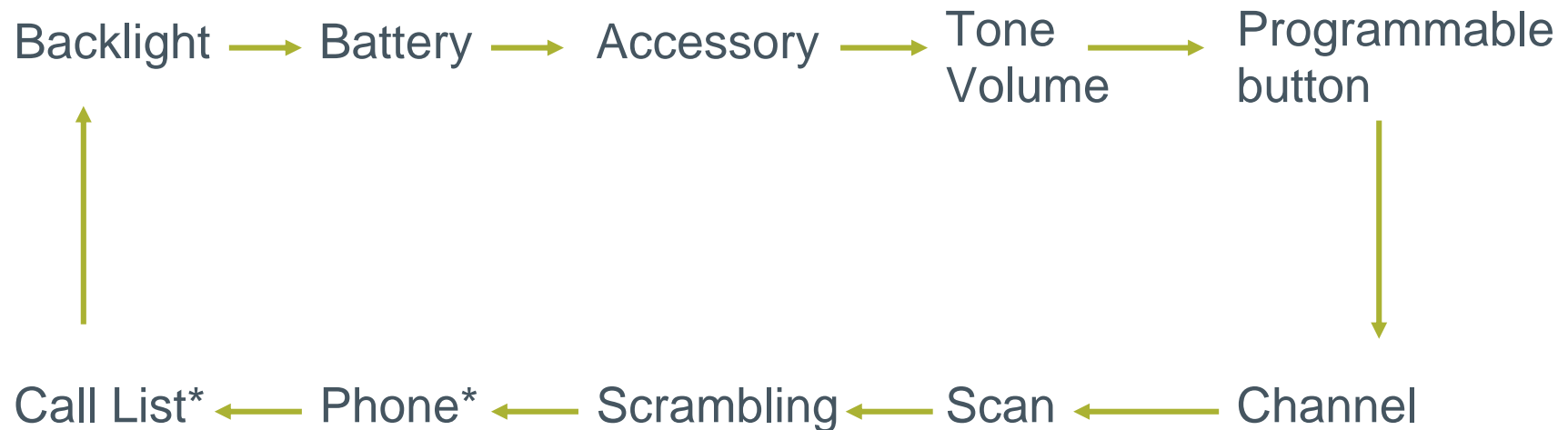
Module 4.4

FPP



P100 Series

Menu System



**note: only available on full keypad version (P180, P185)*

Module 5

CPS Programming



P100 Series

Module Content

5.1 CPS Programming



MOTOROLA and the Stylized M Logo are registered in the US Patent & Trademark Office.
All other product or service names are the property of their respective owners. © 2009 Motorola, Inc.
All rights reserved.

Module 5.1

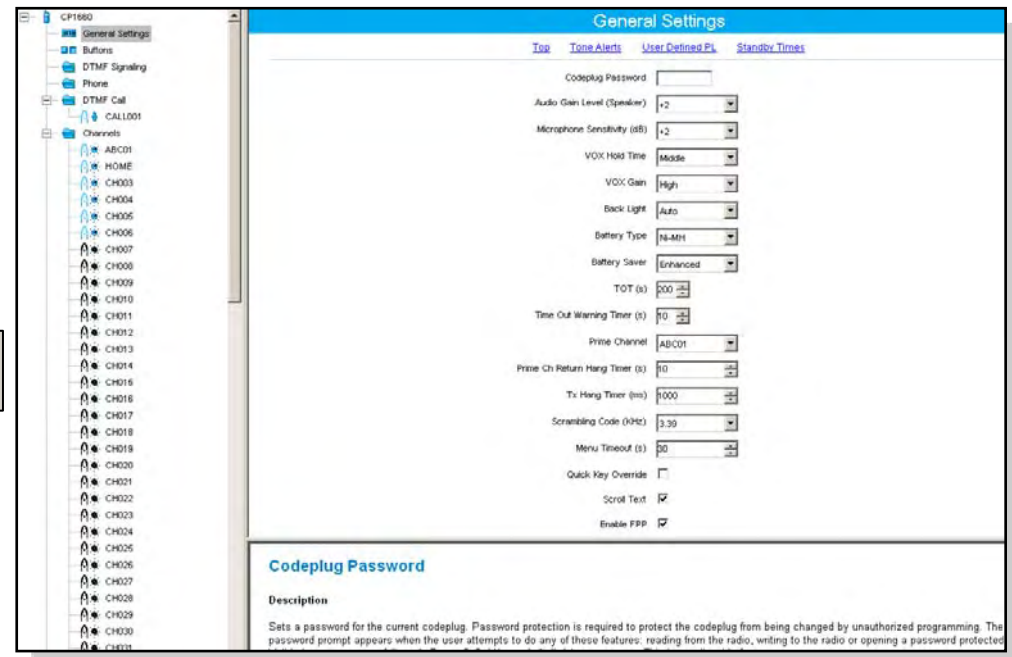
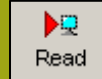
CPS Operations



P100 Series

Basic setup

- Connect the USB programming cable from the computer to the radio.
- Load the CPS on the computer, and click on the read button on the top toolbar.
- The screen as shown below will appear.



Module 5.1

CPS Operations (cont.)



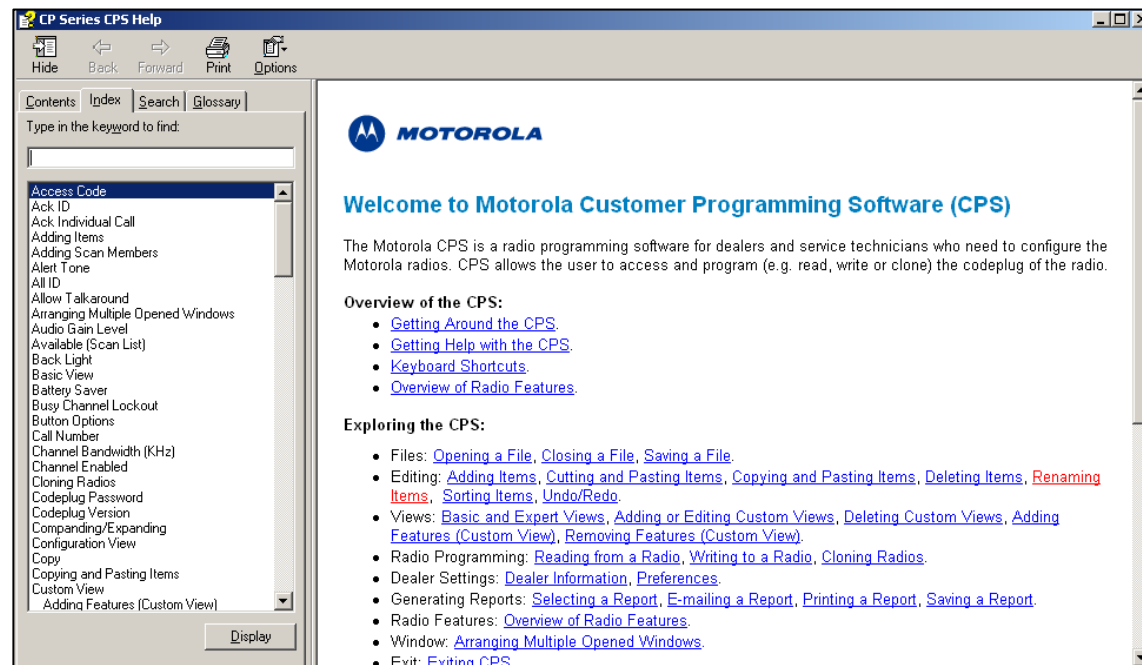
P100 Series

Basic Feature setup

- General Setting
- Button Assignment
- DTMF Signaling setting
- Channels Setting
- Scan List setting

Help Tool

- Go to the Help toolbar



Module 5.1

CPS Operations (cont.)



P100 Series

General Setting

CP Series Customer Programming Software - [CP1300 codeplug.bca]

File Edit View Device Window Help

Open Save Delete Copy Paste Search Read Write Close Reports About

General Settings

[Tab](#) [Tone Alerts](#) [User Defined PL](#) [Standby Times](#)

Codeplug Processor: []

Audio Gain Level (Speaker): +2

Microphone Sensitivity (dB): +2

VOX Hold Time: Mute

VOX Gain: High

Backlight: Toggle

Battery Type: Li-Ion

Battery Saver: Off

TOT (s): 90

Time Out Warning Time (s): 10

Prime Channel: Selected

Prime Ch Return Hang Time (s): 5

Tx Hang Timer (s): 1000

Scrambling Code (KHz): 3.38

Menu Timeout (s): 30

Quick Key Override: []

Send Text: [X]

Enable FPP: [X]

Tone Alerts

Alert Tone: [X]

Low Battery Alert Tone: [X]

Low Battery Alert Tone

Description

Sounds when the radio's low battery threshold is reached while a call is being received, or while the radio is in idle mode. This is a radio-wide feature.



MOTOROLA