



**ACS/CSI**

**3547 A-1 Meeks Farm Road, Johns Island, SC, 29455, USA**

Phone: 843-559-4889 Fax: 843-559-4881

**12-15, Sedgeway Business Park, Witchford, Ely, Cambs, CB62HY, UK**

Phone: 44-1353-669916 Fax: 44-1353-669917



# The 800 Series TEA<sup>®</sup> Analyzers

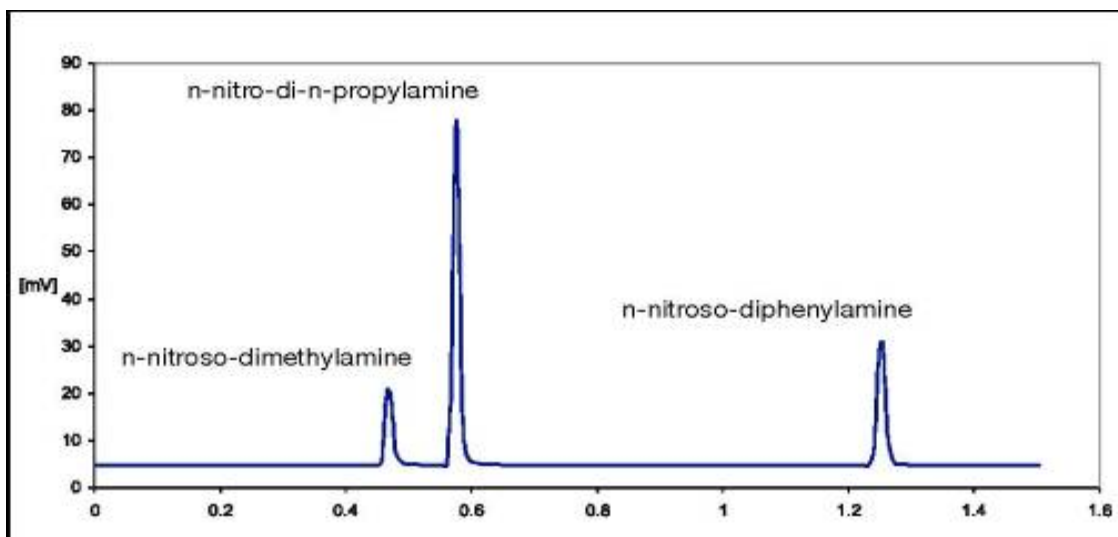
ACS/CSI is pleased to introduce the next generation of TEA<sup>®</sup> Organic Nitrogen Detectors. For decades the TEA<sup>®</sup> has been the industry standard in nitrosamine analysis due to its incredible sensitivity and selectivity for nitrogen containing compounds. ACS/CSI purchased the TEA<sup>®</sup> product line in 2006 with the intention of redesigning, reengineering, and modernizing the old models. During the development of the new models ACS/CSI worked closely with current users to learn what worked well in the existing models and what would be preferred in a new and improved model. Incorporating the end user input and our own expertise into a final design has produced the all new family of 800 Series TEA<sup>®</sup> Analyzers that are smaller, more sensitive, easier to service, and simpler to operate.



## Features

- Significantly smaller footprint that is about 1/3 the size compared to previous models.
- Space saving top mounted Pyrolyzer compatible with all GC systems.
- New O<sub>3</sub> generator with electronically controlled oxygen flow and ozone production.
- USB or RS232 computer operation so no manual switching is required.
- Pyrolyzer temperature range of 250°C to 700°C for Nitro or Nitroso modes.
- Optional separate 850°C catalytic Pyrolyzer for Nitrogen mode.
- Nitro/Nitroso modes to eliminate interfering nitrogen compounds.
- Cold Trap Replacement (CTR) filters to remove pyrolysis by-products.
- Specifically designed to be easier service and maintenance.
- External vacuum pump with an oil-free option.

# Chromatogram



# Specifications

	MODELS 805, 810, 815	MODELS 820, 825	MODELS 830, 835
Operating Modes	Nitro, Nitroso	Nitro, Nitroso	Nitro, Nitroso, Nitrogen
Sensitivity	< 3pg N/sec Signal to Noise 3:1	< 1pg N/sec Signal to Noise 3:1	< 1pg N/sec Signal to Noise 3:1
Selectivity	gN/gC > 10 <sup>7</sup>	gN/gC > 10 <sup>7</sup>	gN/gC > 10 <sup>7</sup>
Linearity	10 <sup>-4</sup>	10 <sup>-4</sup>	10 <sup>-4</sup>
Oxygen Control	µp control 0-20 ml/min	µp control 0-20 ml/min	µp control 0-20 ml/min
O <sub>3</sub> Voltage	µp control sensitivity selection 0-150	µp control sensitivity selection 0-150	µp control sensitivity selection 0-150
Signal Output	1V, 10V	1V, 10V	1V, 10V
PC Connectivity	USB or RS232	USB or RS232	USB or RS232
Dimensions (cm)	36 (D) x 38 (W) x 37 (H)	36 (D) x 38 (W) x 37 (H)	36 (D) x 38 (W) x 37 (H)
Weight (Kg)	15	16	16

ACS/CSI is constantly seeking to improve its products and services and therefore reserves the right to amend the TEA® system specifications as warranted.



**ACS/CSI**

**3547 A-1 Meeks Farm Road, Johns Island, SC, 29455, USA**

Phone: 843-559-4889 Fax: 843-559-4881

**12-15, Sedgeway Business Park, Witchford, Ely, Cambs, CB62HY, UK**

Phone: 44-1353-669916 Fax: 44-1353-669917

