

Worktops, splashbacks  
and upstands exclusively  
manufactured by

**BB**  
**BUSHBOARD**



**prima**

classic design

# a passion for worksurfaces

At Bushboard, we're passionate about our worksurfaces. That's because we want you to feel delighted with the one you choose for your home. Our Prima range gives you the very best in design, because we invest so much time in developing a palette that suits everyday living.

Take a look at the shimmering beauty of the new Radiance designs and the outstanding elegance of the True Scale granites. Totally unique to Prima, these life-sized designs printed in high definition mirror exclusive and luxurious granites that are guaranteed to make a signature statement in your home.

In Prima, there are more than 50 designs to inspire you and then leave you with that special feeling of a choice well made, long after your worksurface has been installed. They're incredibly flexible too, with a choice of 3m, 3.6m and 4.1m sizes, as well as offering integrated solutions for worksurfaces, upstands and splashbacks. Every worksurface we make also has an unrivalled reputation for durability, performance and easy maintenance. So you can be sure your Prima worksurface will not just look superb, but will also last extremely well.

Front cover:  
**True Scale Blue Storm**  
worksurface



True Scale Golden Mascarello  
worksurface and upstand





# truly elegant

Bring a distinctive quality to your kitchen with our True Scale granites.

Printed in life-like proportion they perfectly mirror the beauty of exclusive and luxurious granites allowing you to create a truly top-end look. And the subtle shimmer of our new Radiance texture enhances the depth and quality of the design.

Elegant. Exclusive. Individual.

True Scale Blue Storm  
worksurface





True Scale Antique Mascarello  
worksurface and upstand



Polar Radiance  
worksurface

# absolutely radiant

Radiance is a brand new texture combining a gently undulating surface with a subtle gloss element. The softly shimmering surface entices the eye and is appealing to touch.

It works beautifully on our plain colour palette of Black, White, Ice and Espresso, refracting the light to give the worksurface wonderful depth and clarity.

Monochromatic elegance at its very best.





Black Granite Radiance  
worksurface and splashback



Ice Radiance worksurface



Olympus Glastex Gloss  
worksurface and upstand





# feel the beauty

Feel the beauty of Riverwash.

Warm to the touch and sophisticated on the eye.

Innovative to a tee, the unique Riverwash texture enhances the beautifully subtle designs to create a stunning 3D effect. Just as hardwearing. Just as easy to maintain. Just more visually engaging.

Espresso Riverwash

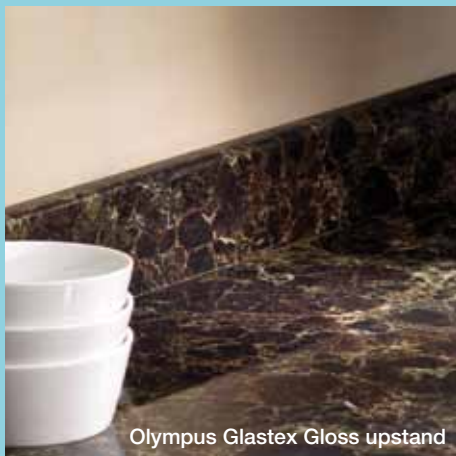


Zebano Blocked  
worksurface and upstand



# the best of both worlds

Prima excels in woodgrains. They capture natural-looking beauty through superb depth of colour and high print definition. From the exotic tones of Zebrano to the mellow hues of Cherry, they offer the best of both worlds — fabulous natural beauty with hygienic easy to maintain quality.



Olympus Glastex Gloss upstand

Why not go for an integrated design look?

Prima offers total design flexibility with an excellent range of accessories. Take laminate splashbacks. Compared to tiling, they're not only easy to fit but simple to look after. Or choose an upstand from our extensive collection, there's one for every worktop colour; simple, stylish and contemporary. A smart finishing detail between your worksurface and wall.

# finish the look

Brushed Aluminium  
splashback and Smoke  
Riverwash worksurface






# a smart choice

Prima worksurfaces are available in a variety of lengths and widths. We've developed this flexibility so you can use worksurfaces more smartly, while also being more eco-friendly.

Save on material. Save on waste.



Amber Kashmir  
worksurface and upstand

				 Complete colour matched adhesive and sealant	3600 X 600mm 3600 x 665mm breakfast bar 3600 x 900mm breakfast bar	3000 X 600mm 4100 X 600mm 4100 X 665mm breakfast bar 4100 X 900mm breakfast bar	3000 x 600 x 8mm midway 1500 x 1200 x 8mm hob panel	3000 x 100 x 20mm upstand	3000 X 600mm 3000 X 900mm breakfast bar
		Design	Texture		40mm	40mm	splashback	upstand	30mm
NEW True Scale	3467	<b>Blue Storm</b>	Radiance	Chocolate	• • •		• •	•	
	3465	<b>Golden Mascarello</b>	Radiance	Fudge	• • •		• •	•	
	3466	<b>Antique Mascarello</b>	Radiance	Mushroom	• • •		• •	•	
NEW Radiance	1340	<b>Polar</b>	Radiance	Ice White	• • •		• •	•	
	5212	<b>Ice</b>	Radiance	Ash grey	• • •		• •	•	
	6219	<b>Espresso</b>	Radiance	Chocolate	• • •		• •	•	
	2699	<b>Black Granite</b>	Radiance	Jet Black	• • •		• •	•	
Riverwash	2699	<b>Black Granite</b>	Riverwash	Jet Black	• • •		• •	•	
	6219	<b>Espresso</b>	Riverwash	Chocolate	• • •		• •	•	
	6218	<b>Latte</b>	Riverwash	Vanilla	• • •		• •	•	
	6220	<b>Smoke</b>	Riverwash	Basalt Grey	• • •		• •	•	
Glastex Gloss	6227	<b>Amber Kashmir</b>	Glastex Gloss	Fudge	• • •			•	
	2699	<b>Black Granite</b>	Glastex Gloss	Jet Black	• • •		• •	•	
	7178	<b>Black Quasar</b>	Glastex Gloss	Jet Black	• • •		• •	•	
	6242	<b>Italian Marble</b>	Glastex Gloss	Vanilla	• • •			•	
	6257	<b>Olympus</b>	Glastex Gloss	Chocolate	• • •		• •	•	
Crystal and Universal	0331	<b>Toscana</b>	Glastex Gloss	Chestnut	• • •			•	
	2381	<b>Amber Granite</b>	Crystal	Vanilla		• • • •		•	
	6227	<b>Amber Kashmir</b>	Crystal	Fudge		• • • •		•	
	4612	<b>Amber Slate</b>	Universal	Fudge		• • • •		•	
	4615	<b>Beech Butcher Block</b>	Universal	Oatmeal		• • • •		•	• •
	2699	<b>Black Granite</b>	Crystal	Jet Black		• • • •	• •	•	• •
	7178	<b>Black Quasar</b>	Crystal	Jet Black		• • • •	• •	•	
	2935	<b>Blue Carpathia</b>	Crystal	Slate Grey		• • • •		•	
	1673	<b>Blue Magma</b>	Crystal	Slate Grey		• • • •	• •	•	
	1793	<b>Champagne Haze</b>	Crystal	Ivory				•	• •
	3812	<b>Cherry Butcher Block</b>	Universal	Chestnut		• • • •		•	
	5850	<b>Classic Onyx</b>	Universal	Ivory				•	• •
	3855	<b>Clear Maple</b>	Universal	Vanilla		• • • •		•	
	4536	<b>Cornish Granite</b>	Crystal	Ivory		• • • •	• •	•	• •
	2510	<b>Golden Morning Oak</b>	Universal	Toffee				•	• •
	4874	<b>Granite Black Brown</b>	Crystal	Basalt Grey		• • • •		•	
	4610	<b>Green Laliue</b>	Crystal	Sage Green		• • • •		•	
	0332	<b>Himalaya</b>	Universal	Vanilla		• • • •		•	
	1936	<b>Lava Dust</b>	Crystal	Silver Grey		• • • •		•	• •
	6506	<b>Madrid Jade</b>	Crystal	Chocolate		• • • •	• •	•	
	2851	<b>Malachite Carpathia</b>	Crystal	Sea Green		• • • •		•	• •
	4120	<b>Millstar Cream</b>	Universal	Silver Grey		• • • •		•	
	4121	<b>Millstar Grey</b>	Universal	Silver Grey		• • • •		•	
	0330	<b>Monseratt</b>	Crystal	Chocolate		• • • •		•	
	2726	<b>Natural Beech</b>	Universal	Vanilla				•	• •
	0215	<b>Natural Block Walnut</b>	Crystal	Fudge		• • • •	• •	•	
	6257	<b>Olympus</b>	Crystal	Chocolate		• • • •	• •	•	
	2843	<b>Paradise Granite</b>	Crystal	Fudge		• • • •		•	
	3522	<b>Perlato Granite</b>	Crystal	Pewter Grey		• • • •		•	
	1340	<b>Polar White</b>	Crystal	Ice White		• • • •		•	• •
	2743	<b>Sandgrain</b>	Crystal	Ivory		• • • •		•	
	6233	<b>Soft Walnut Blocked</b>	Universal	Chocolate		• • • •		•	
	1782	<b>Stardust</b>	Crystal	Basalt Grey		• • • •		•	• •
	0331	<b>Toscana</b>	Crystal	Chestnut		• • • •	• •	•	
	5726	<b>Utopia Granite</b>	Crystal	Fudge		• • • •	• •	•	
	1790	<b>Warm Haze</b>	Crystal	Fudge				•	• •
	6228	<b>Wenge Blocked</b>	Universal	Chocolate		• • • •	• •	•	
	0333	<b>Woodmix</b>	Universal	Oatmeal		• • • •		•	
	6235	<b>Zebrano Blocked</b>	Universal	Chocolate		• • • •	• •	•	
Metallic	8071	<b>Brushed Aluminium</b>	Metal	Silver Grey			• •		
Spashbacks	3985	<b>Brushed Silver</b>	Matt	Silver Grey			• •		

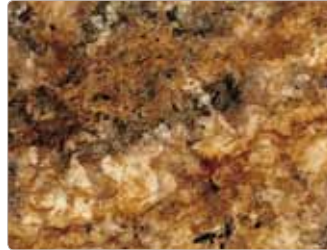
All worksurfaces come with a full length edging strip and care leaflet.

Glastex gloss and radiance worktops include edge protection to protect in transit.





**Blue Storm** Radiance WSU



**Golden Mascarello** Radiance WSU



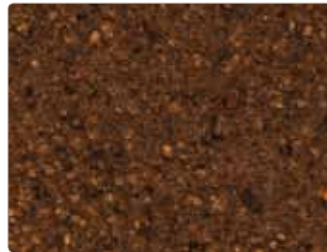
**Antique Mascarello** Radiance WSU



**Polar** Radiance WSU



**Ice** Radiance WSU



**Espresso** Radiance WSU



**Black Granite** Radiance WSU



**Black Granite** Riverwash WSU



**Espresso** Riverwash WSU



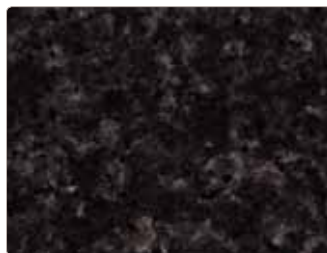
**Latte** Riverwash WSU



**Smoke** Riverwash WSU



**Amber Kashmir** Glastex Gloss WU



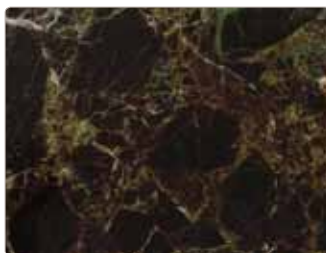
**Black Granite** Glastex Gloss WSU



**Black Quasar** Glastex Gloss WSU



**Italian Marble** Glastex Gloss WU



**Olympus** Glastex Gloss WSU



**Toscana** Glastex Gloss WU



**Amber Granite** Crystal WU



**Amber Kashmir** Crystal WU



**Amber Slate** Universal WU



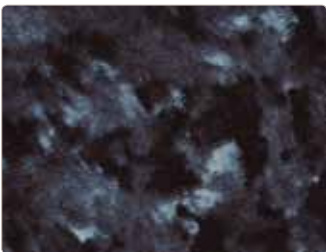
**Black Granite** Crystal WSU



**Black Quasar** Crystal WSU



**Blue Carpathia** Crystal WU



**Blue Magma** Crystal WSU



**Champagne Haze** Crystal WU



**Classic Onyx** Universal WU



**Cornish Granite** Crystal WSU



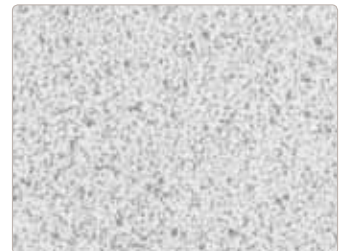
**Granite Black Brown** Crystal WU



**Green Lalique** Crystal WU



**Himalaya** Universal WU



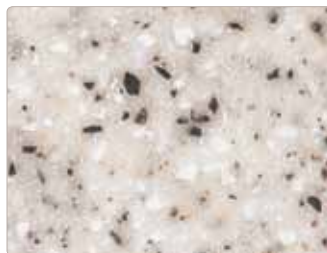
**Lava Dust** Crystal WU



**Madrid Jade** Crystal WSU



**Malachite Carpathia** Crystal WU



**Millstar Cream** Universal WU



**Millstar Grey** Universal WU



**Monseratt** Crystal WU



**Olympus** Crystal WSU

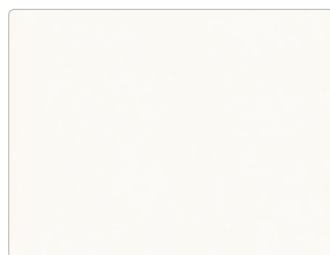


**Paradise Granite** Crystal WU



**Perlato Granite** Crystal WU





**Polar White** Crystal WU



**Sandgrain** Crystal WU



**Stardust** Crystal WU



**Toscana** Crystal WSU



**Utopia Granite** Crystal WSU



**Warm Haze** Crystal WU



**Beech Butcher Block** Universal WU



**Cherry Butcher Block** Universal WU



**Clear Maple** Universal WU



**Golden Morning Oak** Universal WU



**Natural Beech** Universal WU



**Natural Block Walnut** Crystal WSU



**Soft Walnut Blocked** Universal WU



**Wenge Blocked** Universal WSU



**Woodmix** Universal WU



**Zebrano Blocked** Universal WSU



**Brushed Aluminium** Metal S



**Brushed Silver** Matt S

For A6 samples call  
**01933 232 242**

W = worksurface  
U = upstand  
S = splashback

# made to last

## Quality

Manufacturing with the finest materials is what gives Bushboard worksurfaces their signature quality compared to competitive products. While beautiful and stylish to look at, they are also constructed to cope with the wear and tear of everyday living.

Independently tested to BS/EN438, your Bushboard worksurface is designed to withstand knocks, abrasions, chemicals, cigarette burns, steam, stains from juice, tea, wine or coffee. It is also highly resistant to heat, although we recommend the use of a protective pad as saucepan bottoms can become extremely hot.

Bushboard select E1 grade high-density particleboard for strength and stability. Its homogenous construction generates excellent machining capability for sink cutouts and mitre joints. They are surfaced in Formica® high-pressure laminate. A resin impregnated moisture resistant barrier combines with Bushboard's unique 'Tekseal' cast resin to completely seal the underside against moisture penetration from everyday spills.

## Glastex Gloss and Radiance textures

Glastex Gloss and Radiance textures need a little more care and attention than our Riverwash, Crystal and Universal textures. Glastex Gloss technology offers an advanced level of protection against scuffing, but don't forget both are fashionable finishes that can mark and scratch more easily with everyday use. To maintain their lovely glossy look, you should buff up the surface to a shine with a soft cloth after normal wiping down.

## Lifetime Guarantee

Bushboard worksurfaces are guaranteed for their lifetime. Bushboard will make good by repair and/or replacement (at its discretion) any Prima product of its manufacture which can be shown to have failed by reason of defects in its manufacture, that is subject to wear and tear, provided the product has been installed and used in accordance with the manufacturer's instructions and that the products are used for their intended purpose / application. Proof of date and place of purchase required. This guarantee is in addition to your statutory rights as a consumer and does not affect your rights in any way.

## Care & Maintenance

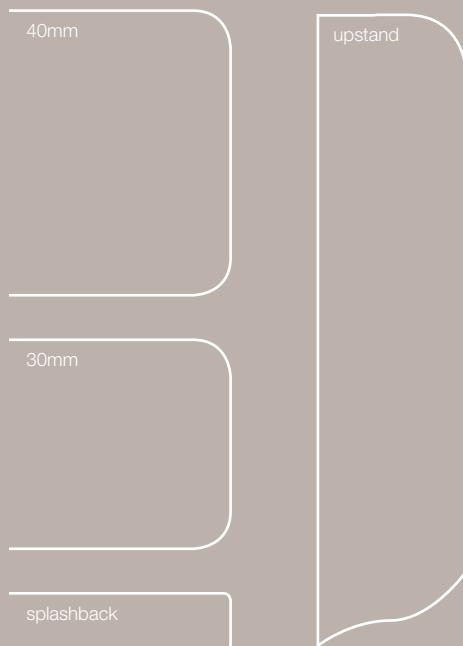
Bushboard worksurfaces are so easy to maintain. Unlike other worksurface materials such as timber, composites or granites, they require no regular maintenance or repair. All you need to do is wipe them with a moist cloth and your favourite mild detergent. For more stubborn marks such as fruit juice or coffee, leave the detergent to soak on the surface for a little while before rinsing thoroughly. Obviously, your worksurface can become damaged if mistreated, so we recommend some sensible measures like placing hot pans or casserole dishes on protective mats and mopping up spills quickly. Full details can be found in our care & maintenance leaflet. One of these is included with every worktop purchased but if you need a copy please call our Customer Service Team or log onto our website.





## Profiles

Worktops are profiled along one long edge. Breakfast bars are profiled along two long edges.



**BB complete**   
colour matched worktop sealant

BB Complete is a strong, waterproof adhesive & sealant specially designed from aircraft grade compounds to produce a long lasting and elegant finish to your Prima worktops.

Available in twenty carefully chosen colourways BB Complete co-ordinates and blends with Prima to bond and seal joints, bond and seam upstands & splashbacks and seal tiling and cut edges.

Ask your installer to use BB Complete to ensure a professional co-ordinated finish that's designed to last.

Fudge	Mushroom	Toffee	Chestnut	Chocolate
Jet Black	Slate Grey	Basalt Grey	Silver Grey	Ash Grey
Pewter Grey	Ice White	Ivory	Vanilla	Oatmeal
Sea Green	Olive Green	Sage Green	Airforce Blue	Cherry Red

# made by Bushboard



Bushboard is the UK's largest independent manufacturer of worksurfaces. With a manufacturing history dating from the 1930's and more than 20 years experience in the production of premium worksurfaces, we are confident about the quality and the style statement our worksurfaces can make to your home. Continual investment, combined with real passion for our business, means we use the latest technologies and manufacturing techniques to keep our products at the forefront of our industry. So confident are we about their superior quality, that every Prima worksurface produced by us carries a lifetime guarantee.

We have an exemplary record in health and safety. Over the last two decades we have received consistent recognition from the industry-recognised RoSPA (Royal Society for the Prevention of Accidents) and BSC (British Safety Council), gaining many awards in the process.

We also take our environmental responsibilities very seriously. In the kitchen industry, we are proactive in encouraging smarter use of 3m and 4.1m worksurfaces to try and reduce over-specification of product when shorter lengths will do the job. It means less off-cuts and waste having to go to landfill. Continued investment in process technology has reduced our waste by 500 tonnes and we continue to look at ways to reduce it even further – the most recent being a system to bale all our paper, cardboard and plastic for recycling.

As a large consumer of chipboard, we hold independent accreditation to prove that all our material maintains 'chain of custody' with PEFC certification; guaranteeing that it comes from properly environmentally managed and sustainable sources.

Italian Marble  
Glastex Gloss



# free sample service

Back cover:  
**Espresso Radiance**  
worksurface

Prima worksurfaces will add style and elegance to your kitchen. To help you with your choice, we have a dedicated Customer Service Team to give you all the friendly help and advice you need.

We can send you A6 samples of the designs you are considering. We also offer advice on installing and looking after your Prima worksurfaces, and our care & maintenance leaflet is available by post, email or on our website.

The entire Prima range is on display at over 2,500 kitchen retailers nationwide and visiting one of them is often the best way to make your final decision. The team can advise which retailers are nearest to you.

All samples are available free of charge by contacting:

tel: 01933 232 242

fax: 01933 232 286

email: [samples@bushboard.co.uk](mailto:samples@bushboard.co.uk)

[www.bushboard.co.uk](http://www.bushboard.co.uk)

Bushboard Ltd  
9-29 Rixon Road  
Wellingborough Northants NN8 4BA

The company reserves the right to change specifications at any time, without notice. Every effort has been made to achieve faithful representations of our products in this brochure, but due to printing limitations we recommend that samples of actual material are requested before purchasing.

Formica and the Formica Logo, Prima and Formica Prima are registered trade marks of The Formica Corporation. Made by Bushboard Limited in the United Kingdom under licence from Formica Limited. Glastex®, Splashback by Bushboard® are registered trademarks of Bushboard Limited.



Cherry Butcher Block



Smoke Riverwash





BB  
BUSHBOARD