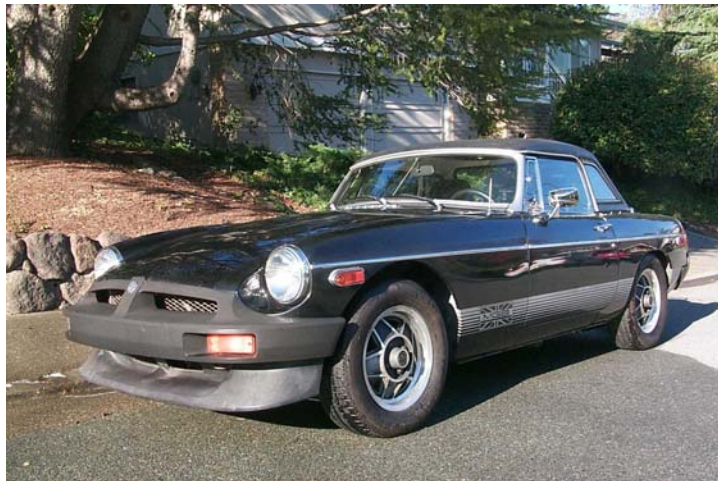


BRITISH AUTOMOTIVE'S 1979 MGB LIMITED EDITION
\$7,500.00 OBO

VEHICLE ID: GHN5UL499258G (CA. NON-OP)
VEHICLE LICENSE NO: 1AMC680
DONOR VEHICLE ID: GHN3L16408 (1964) (CA. OPERATIONAL)
VEHICLE LICENSE NO: 718VIO

MILEAGE 111,279 (GENUINE MILEAGE) LESS THAN 1500 MILES OVER THE LAST 12 YEARS.



P0003415

ENGINE: LOW MILEAGE (1500 MILES SINCE REBUILD) WITH BRITISH AUTOMOTIVE'S 1924cc BIG BORE CONVERSION WITH PORTED AND POLISHED BIG VALVE CYLINDER HEAD. ADVANCED VALVE TRAIN (AVT) **SEE TECHNICAL ARTICLE MGB24.** MIKUNI PHH44 SIDE DRAUGHT CARB. OIL COOLER WITH STAINLESS STEEL HOSES. JET COATED EXHAUST HEADER WITH CUSTOM BIG BORE EXHAUST SYSTEM. PERTRONIX IGNITION WITH MSD (MULTIPLE SPARK DISCHARGE) AND CD (CAPACITOR DISCHARGE HT WIRES).

COOLING SYSTEM: STOCK WITH HAYDEN 12" COOLING FAN IN PLACE OF LUCAS TWIN ELECTRIC FANS (WORKS JUST AS WELL).

TRANSMISSION: GOOD WITH WORKING OVERDRIVE.

REAR AXLE: 2010 REBUILT REAR AXLE (NEW CROWNWHEEL & PINION 3.9:1 WITH ALL NEW BEARINGS INCLUDING HUB BEARINGS).FITTED WITH QUAIFE DIFFERENTIAL.

FRONT SUSPENSION: CURRENTLY STOCK WITH THE FOLLOWING:

¾" SWAY BAR.

480LB (RED) COIL SPRINGS.

POLYURETHANE SUSPENSION BUSHES.

CROSS-MEMBER POLY MOUNTING PADS.

COSTELLO CROSS-MEMBER CASTOR WEDGES.

ALTERNATE FRONT SUSPENSION: A COMPLETE **RON HOPKINSON** FRONT SUSPENSION KIT IS INCLUDED. EXISTING CROSS MEMBER HAS BEEN MODIFIED TO ACCEPT THIS KIT.

REAR SUSPENSION: BRITISH AUTOMOTIVE'S CUSTOM REAR SUSPENSION WITH COMPOSITE ROAD SPRINGS, TRACTION CONTROL ARM (TCA) KIT AND KYB CUSTOM TELESCOPIC SHOCK KIT.

RIDE HEIGHT. FRONT AND REAR SUSPENSION LOWERED TO ACCEPTABLE SPECIFICATIONS. (15" FRONT & REAR MEASURED FROM CENTER OF ROAD WHEEL TO UNDERSIDE OF FENDER CHROME STRIPS).

BRAKES: NEW BRAKE MASTER CYLINDER (2010). CARBON KEVLAR BRAKE PADS WITH STAINLESS STEEL BRAIDED BRAKE HOSES FRONT AND REAR.

BODY CONVERSION KIT: A BRAND NEW RUBBER BUMPER TO CHROME BUMPER CONVERSION KIT (**MGOCUK**) IS INCLUDED IN THE SALE.

BODYWORK: GOOD CONDITION.

PAINTWORK: REQUIRES NEW PAINT JOB.

INTERIOR: NEEDS SEAT REBUILD, DASH TOP REPLACEMENT AND DOOR APERTURE SEALS (PROVIDED).

SNUG TOP: IN EXCELLENT CONDITION.

SOFT TOP: GOOD CONDITION (WITH 1964 STYLE PULL APART FRAME).

ROLL BAR. GOOD CONDITION.

WHEELS: COULD DO WITH A PAINT JOB.

TIRES (5): BRAND NEW SUMITOMO 185/70R14 88H.

ADDITIONAL PARTS SUPPLIED WITH SALE

NEW ITEMS:



P0003378



P0003379



P0004581

ADDITIONAL PARTS SUPPLIED WITH SALE

USED:



P0003392



P0003393

NOTE: AIR PUMP & CARB ARE REBUILT UNITS

ITEMS NOT SHOWN

NEW: COMPLETE EXHAUST SYSTEM FOR 63-74.5 AND ALSO 75>