

Document No.: LS20081101001

User's Guide Of [VJVOD] P2P VOD System

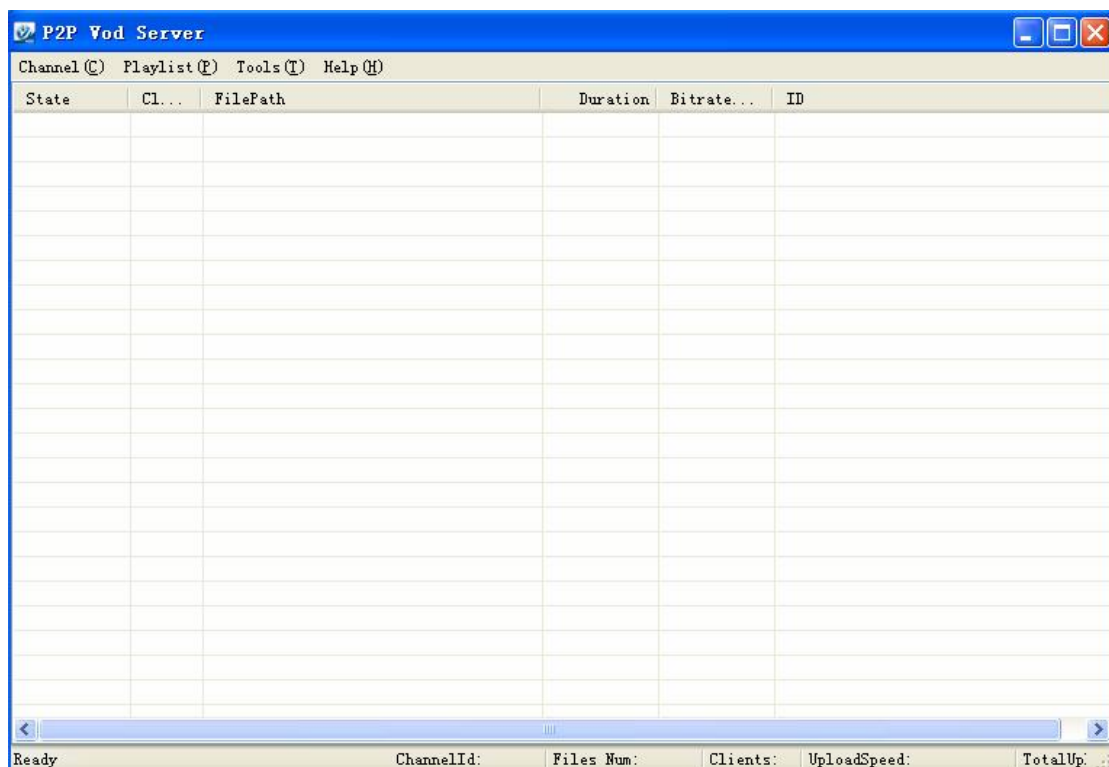
NANJING NAGA SOFT INC.

Contents

Software interface	3
Basic operations	4
Flow diagram	4
Steps	4
The introductions to function column.....	5
Channel:.....	5
Playlist:	6
Tools.....	6
《System Configuration》	6
Network:	6
Memory pool:	7
Support File:.....	7
Anti-Leech:	7
The introductions to playlists	8
Add	8
Delete:.....	8
Map:	9
Monitor:	9
Advanced function.....	9
1. Anti-Leech.....	9

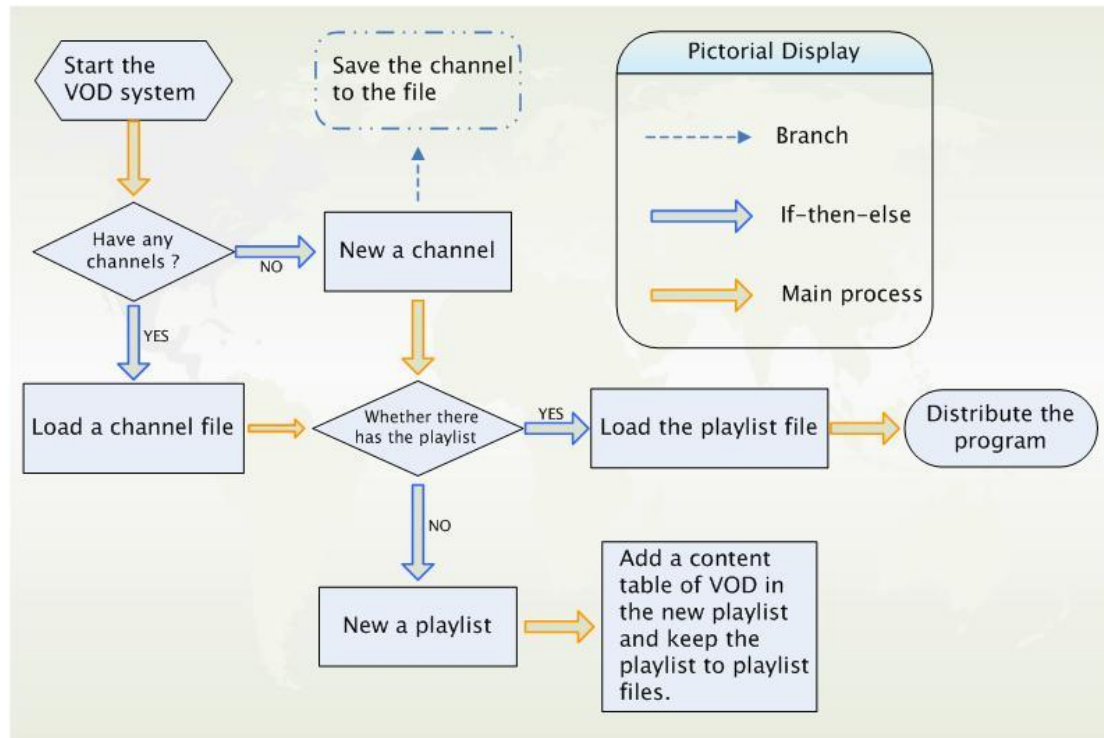
2. Monitor Dir	10
Map.....	11
ISAPI Map File (IIS)	12
The introductions to Ads	15
Function of File written.....	16
About us	17
Contact us.....	18

Software interface



Basic operations

Flow diagram



Steps

1. New or load a channel.
2. New a playlist.
3. Click the right mouse button or click the button "add" to add a new playlist in the playlists. (Due to each file needs to compute the identification code when adding the lists in bulk , the time may be longer when there are a large number of files, please be patient)
4. Click on the button "save" ,and keep the playlist to playlist files.
5. Load a playlist. Hereto, the server-side setting is finished.

6. Software releases: use the mouse right-button and click the playlist in the server window → copy the web page playing code → integrity mode. In this way the web code will be got, and paste the codes into the web file.
7. Watching: Open the web page pasted with the code and watch the program.

The introductions to function column

Channel:

<<New >> The software applies for a channel from the server to get a available channel.

<<Load >> Load a channel file.

<<Save >> After a successful application of a channel, and save it, in order to load its own channels next time, save the channel obtained as a channel's document (VVC Format).

<< Load Playlists>> To add the VOD programs ,need to load the program list files (VVP format).

<<Exit>> Close the VOD system.

Playlist:

<<New >> Build a new playlist.

<<Edit >> Edit an existing playlist file. (VVP format)

Tools

<<H2V File>>

<<Network Monitor >> See the flow state of the program which is selected.

<<Search >> Use the keyword to search the program to check that it is existed or not.

<<System Config>> The relating configuration of the VOD server contains Network, Memory pool , Support File, Anti-Leech.

<< Anti-Leech >>After changing the file's content of the Anti-Leech, with this function, refresh the configuration files of the Anti-Leech directly.

《System Configuration》

Network:

<<NAT Server>> The default address of NAT Server which is just as the landing

server of the channels is "www.camelchina.com:3501", provided by the sever of Naga Software company ,the data of the VOD's program will not be transferred with this server(NAT Server).Please don't modify this item, otherwise it will cause the problem of the channels landing failure.

<<UDP Port Num >> The default numbers of UDP port are five, that can be modified properly.

<<UDP Port Range>>The range of default ports is between 5000 and 6000,if the impediment of firewall cause the failure of the port available, that can be modified according to your need.

Memory pool:

<<Pool Size>>The default value is 50, that can be modified according to the configuration of the sever. The larger the value is, the less pressure on which the hard disk is. Lengthen the life of hard disk.

Support File:

<<Extension >> The current software can support the file types including wmv, asf, wma, rm, rmvb, flv.

Anti-Leech:

<<Configuration File>>

Add the paths of the Anti-Leech's configuration file. The file type of Anti-Leech's configuration is ".txt". Add the addresses which can be accessed to the notepad file. Every web address in the notepad file occupy a line independently. A single blank line can not be existed between the address, otherwise the addresses after the single line can not be accessed.

The introductions to playlists

Add

<<Add Files>> Add the specified files to the playlist.

<<Add Folder>> Add all available video files included in the specified folder to playlist.

Delete:

<<Delete All>> Delete all the programs in the playlist.

<<Delete Same>> Delete the same programs in the playlist.

<<Delete Error>> Delete the programs which their paths aren't existed or their types are unsupported in the playlist.

<<Delete Selected >> Delete the programs which are selected by user in the playlist.

Map:

<<Add>> Add the map of the virtual and local path.

<<Edit>> Modify address mapping.

<<Delete>> Delete the selected map.

<<Import>> Import the notepad document which its format is correct, and the file type is TXT .

<<Save>> Export the map table, and save it to a notepad document.

Monitor:

<<Add>> Add the local directory path which needs to be monitored.

<<Delete>> Remove the selected directory.

<<Import>> Import the notepad file which has registered directory paths directly. (In the notepad, every path must occupy a single line, and a blank line and a nonexistent path is forbidden. PS: the subdirectories under the parent directory are not required to add in addition.)

<< Save >> Save the current list as the notepad's format.

Advanced function

1. Anti-Leech

The function is set up in order to protect the rights and interests of the web site's users. The start-up of this function can prevent the situation of other web sites' Leech. Only can watch the program in the web page which its domain name is permitted .

I. Open the Notepad, and add the web addresses which are permitted to access in it, as shown in the figure one, the web site just fill out the domain name of the home page, dispense with filling out the video addresses in detail, then save it to a .TXT's file.

II. To start software's system configuration up, load the saved files. Finally, click the "start" to finish the setup of the Anti-Leech function.

III. Change the content of configuration file. Choose "to reload Anti-Leech", only to do this can reach the aim of refreshing the list of the Anti-Leech.

2. Monitor Dir

The function of directory monitor can monitor the situation of video's addition and deletion in the directory which is set up by user. It will automatically load the video

programs which are added in the directory to the VOD system's playlist, greatly reducing the user's management workload.

I. First of all, edit the playlist, in the function of "monitor setup", add the directory required to monitor. The software can monitor all the subdirectories under this directory.

II. Pay a attention to save and load the playlist.

III. If the playlist is edited in the midway, the playlist file need to be reloaded, then the setup can take effect only.

Map

Support to map the local path to the network virtual path.

I. First of all, click the "tools" in the function column and then select "H2V File".

II. After pop out a window, add the local directory addresses which is relative to the network virtual one. In the end, choose the path of the generated file, and generate the H2V file.

PS. Mapping function must be used cooperating with the web services, such as the IIS Manager.

ISAPI Map File (IIS)

1. Open the IIS Manager owned by the operating system ,then establish an arbitrary site

2. Set up the web site in the attribute

The IP address and port is identified in the web site ,the default IP is local computer IP, and the port is 80.

3. Set home directory in the attribute

First, select “script resources to visit” set it to be available. Then set “authority to implement” to "script and executable file", then click "configuration".

4. Application config

Click “add”, and then add a executable file, the file is "IsaDLL.dll" in the VOD system directory ; extension: ". H2v"; action limited to: "GET, POST"; canceled "to confirm whether the document existed." As shown in figure II.

5. The configuration of HTTP head

I. Click <MIME type >. As shown in figure I

II. In the window of MIME type , click “New”; extension: ". H2v"; file type "txt", click the “OK” in the end.

6. Expansion of Web services

I. First of all ,select the “expansion of web services” in the IIS Manager. the click “.h2v”,finally click the attribute .As shown in figure I.

II. Select “the required file” then add the “Isadll.dll” file in the VOD system directory.

7. Restart IIS

After the restart of the IIS, the configuration above can take effect.

8 .Start the VOD, use the map function of the software, set up and generate a file which its suffix is .h2v.

The network path in it, fill out the IP address in the step 1 ,if the port is the default port, the value of the port is 80,and the value can be fill out nothing. Otherwise, the port value must be added after IP address.

9. Generate a file of the map’s configuration

Input"<http://192.168.0.19/.h2v?ReloadConfigFile&user=admin&pass=admin>" in

the IE explorer, if the setting is no problem, it will open a page, showing the address of configuration file.

10. Setup the vjisapi.cfg file

I. Open the "vjisapi.cfg" file, acquiescently , the file is saved in the directory to which the VOD system are installed.

II. In the setting of "local file=", fill out the address of h2v file which is generated in step 8.As shown in the below figure.

11. Setup the file's authorities

I. Right-click the VOD System directory and map file, click "attribute", select "Security", shown as figure I.

II. If there is no the "Everyone" attribute found in the authority, it is required to add manually, click the "add" in the figure I.

III. After the step 2, it will pop-up a window, as shown in Figure II, and then click "advanced" .

IV. Click the "Find" to find "Everyone". Confirm in the end. As shown in Figure III.

12. Verify the Mapping setting is successful or not

Open the IE explorer, fill out the address:

"http://192.168.0.19/.h2v?httpactionstring&http=http://19

2.168.0.19/01.wmv".The " 192.168.0.19" is the IP address which is set up in the step 1. "01.wmv" is the name of mapping content. Please modify these according to your concrete situation.

The introductions to Ads

Step 1: Select the "Tools" in the VOD server.

Select the "ad settings" ,then it will pop out the form of advertisement setting.

If there are ad files in it, click "select ad file" directly to add ad files, then click "apply" to finish .If there are no ad files, then click "New", it will pop out a editor of VJ advertisement.

Step 2: Select the "increase", it will pop out a form of advertisement information.

There are 3 types of ad release, and the type is up to your choice.

Text: It is used to release your advertisement information.

URL: It is the web address linked to the page when the user click the

advertisement.(When the type is video flashbulb is linked to the address of the flash source of the advertisement)

Color: it is used to change the font color of the text in your release.

Coordinates: (Only aim at video flash) It is used to show the play position of video flash.

Length: Set up the time of advertisement release.

Step 3: After setting, click " OK " ,Ad information will be shown in the VJ ad editor.

We can modify the interval time between advertisements, and double-click the single ad to modify. After setting, click "save" to store your advertisement information.

Step 4: Click the " Tools " in the menu of VOD server , then select the " Ad

Setting " of the drop-down dialog, then in the "select ad files" ,select your release Ad file, click "apply" to finish.

Function of File written

File written is a hidden function. The saved file is capable of providing the users with flow.

1. The Prerequisites of file written is that the "Enable cache data" property is existed in the watching code of client. When the value of "enable cache data" property is true, the operation of file written is to begin.
2. To begin write, it will automatically retrieve all the hard disks in the system to

check that the folder of VJVID_Cache is existed or not. If the folder isn't exist, it will automatically detect all the sizes of hard disk space and new a VJVID_Cache folder in the hard disk which size is maximum. It will save the records of client on- demand. The record saved in every file will be divided into two parts, one is file record, and the other is the record of client on-demand. If that folder is existed, the file record will be saved in the original directory. The operation of file written will be stopped until the size of the hard disk equal to 300MB(can be set up).

3. If the operation of file save has been executed, it will start a "VJVID Services" service after the system has been booted next time. We can start or stop that service manually in the services of the Management Tools.

About us

Nanjing NAGA Software Company Limited is a professional software company that is founded in 2006 and devoted to network streaming media, with headquarter in Nanjing and operation center in Guangzhou, boasting for its strong development team and perfect customer service system.

At present the company has independently designed and developed

Blast Streaming Engine that is under patent qualification, which is taken as the engine for the development of NAGA P2P Live Broadcasting System and NAGA P2P VOD System; in addition, we have independently developed the world leading front-end streaming editing system, VJDirector, which integrates Hardware Switching Unit, Subtitler, Network Broadcasting System, Hard Drive Broadcasting system and Video Recorder into one independent software product.

NAGA Software is committed to providing professional streaming service, and now it is performing international promotion; if you have the intention for any cooperation or being a distributor, or you wish to have a localized edition of the software, please contact us.

Contact us

Sales&Cooperation: marketing@nagashare.com

Technical support: help@nagashare.com

MSN: nagasoft@hotmail.com

Address: 602 Room, Tianhebei Street NO.84, Guangzhou, Guangdong,
China

PC: 510620

TEL: +86 +20 38864625